

HERTZ

AUDIO / LICHT / VIDEO

Hertz

Audio

FOH

1 DiGiCo SD9 + D-Rack

- Local
 - 8 Inputs
 - 8 Outputs
 - 2 AES-Inputs
 - 2 AES-Outputs
- Rack
 - 32 Inputs
 - 16 Outputs

OR

1 Sound Craft SI Expression

- Local
 - 16 Inputs
 - 16 Outputs
- Rack
 - 16 Inputs
 - 8 Outputs

PA

4 d&b audiotechnik E12 Loudspeaker NL4
1 d&b audiotechnik E12-D Loudspeaker NL4
2 d&b audiotechnik E8 Loudspeaker NL4
2 d&b audiotechnik E15-X Sub Loudspeaker NL4
4 d&b audiotechnik E6 Loudspeaker NL4
3 d&b audiotechnik E5 Loudspeaker NL4
3 d&b audiotechnik D80 Amplifier NL4

Main PA:

1x E12 per side (Pop)
1x E8 per side (Speech)
1x E15-X Sub per side
1x E12 Flown per side
1x E6 Flown per side

Center:

1x E12-D Flown

Out Fill:

1x E6 per Flown per side

Front Fill:

3x E5

Speakers amplified by d&b audiotechnik D80

Hertz

CONTROL

1 d&b audiotechnik R1 Software

MONMIX

from FOH

MON

4 d&b audiotechnik M6 Monitor NL4
2 d&b audiotechnik D6 Amplifier NL4

- 4 Monitor Groups

MIC

6 Shure - SM58-LCE
2 Shure - Beta 58A
1 Shure - Beta 52A
4 Shure - SM57-LCE
2 AKG - C214
6 Neumann - KM184
2 Sennheiser - MD421
4 Sennheiser E 604
1 ATM 250

2 Shure - ULXD2/B87
1 Shure - ULXD4DE

Wireless ULXD2/Beta 87A Handheld
Wireless Dual Receiver, two channel

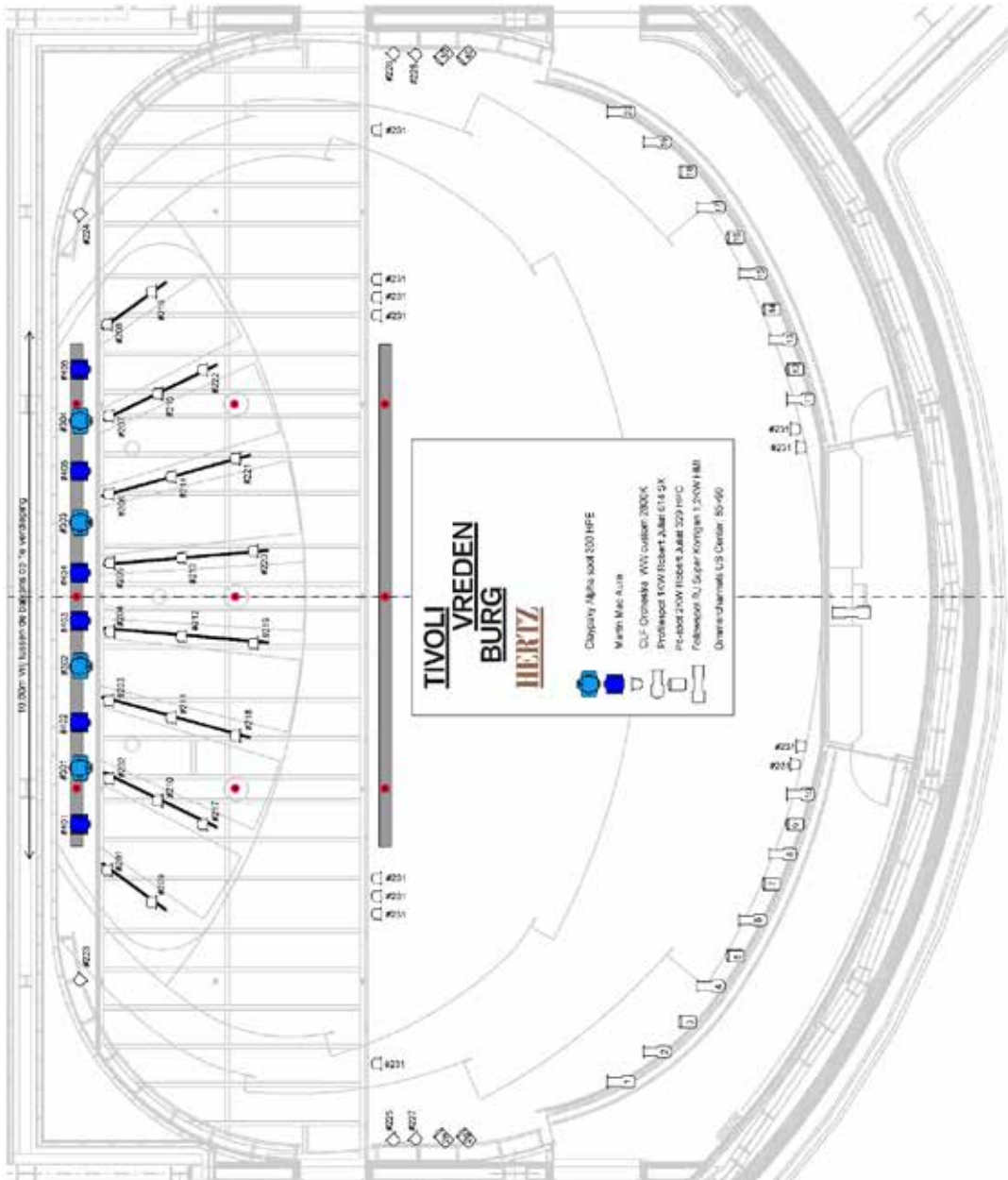
DI

1 ASL - TR2
8 Radial - Pro48
1 Radial - ProD2

Hertz Lights

<p>DESK 1x Highend Hog4 Hedgehog (software v3.2.0 (b1119))</p> <p>Dimmers 90x Ma dimMA channel 2,3kW on Harting16 in grid 6x 2,3kW Stage Center</p> <p>Stage - Conventional 28x Orchestra-light clf dynamic white custom 2800K (fixed focus&position)</p> <p>Stage - Intelligent 4x Clay Paky Alfa spot 300 HPE 6x Martin mac Aura 10x Cls pixelbar tri colore rgb (on stagefloor)</p> <p>Stage - Data 2x Cat6A (1xS.R., 1x U.S.) 1x Cat6A FOH 1x Cat6A FOH on balkony 6x DMx out (2x S.R., 4x U.S.) 4x Dmx in FOH 4x Dmx in FOH on balkony</p> <p>Frontlight 12x Profielspot 1kw robert juliat 614 SX 12x Pc-spot 2kw robert juliat 329 HPC 1x Followspot Robert Juliat Super Korrigan 1,2kW HMI</p>	<p>'STANDARD' LIGHTPLOT See page 2</p> <p>PATCHLIST See page 3</p>
---	--

Hertz Lights - Plot



Hertz Lights – Patchlist

**DMX-PATCH
CONVENTIONAL**

Art-Net 0.1
DMX-Line 1

#	Description	Where	Address		Remarks
101	dimmers		1	90	
	Free		91	200	
201	Ledpar WarmWhite	Grid	201		2 ch, dim/strobe
202	Ledpar WarmWhite	Grid	203		2 ch, dim/strobe
203	Ledpar WarmWhite	Grid	205		2 ch, dim/strobe
204	Ledpar WarmWhite	Grid	207		2 ch, dim/strobe
205	Ledpar WarmWhite	Grid	209		2 ch, dim/strobe
206	Ledpar WarmWhite	Grid	211		2 ch, dim/strobe
207	Ledpar WarmWhite	Grid	213		2 ch, dim/strobe
208	Ledpar WarmWhite	Grid	215		2 ch, dim/strobe
209	Ledpar WarmWhite	Grid	217		2 ch, dim/strobe
210	Ledpar WarmWhite	Grid	219		2 ch, dim/strobe
211	Ledpar WarmWhite	Grid	221		2 ch, dim/strobe
212	Ledpar WarmWhite	Grid	223		2 ch, dim/strobe
213	Ledpar WarmWhite	Grid	225		2 ch, dim/strobe
214	Ledpar WarmWhite	Grid	227		2 ch, dim/strobe
215	Ledpar WarmWhite	Grid	229		2 ch, dim/strobe
216	Ledpar WarmWhite	Grid	231		2 ch, dim/strobe
217	Ledpar WarmWhite	Grid	233		2 ch, dim/strobe
218	Ledpar WarmWhite	Grid	235		2 ch, dim/strobe
219	Ledpar WarmWhite	Grid	237		2 ch, dim/strobe
220	Ledpar WarmWhite	Grid	239		2 ch, dim/strobe
221	Ledpar WarmWhite	Grid	241		2 ch, dim/strobe
222	Ledpar WarmWhite	Grid	243		2 ch, dim/strobe
223	Ledpar WarmWhite	Grid	245		2 ch, dim/strobe
224	Ledpar WarmWhite	Grid	247		2 ch, dim/strobe
225	Ledpar WarmWhite	Grid	249		2 ch, dim/strobe
226	Ledpar WarmWhite	Grid	251		2 ch, dim/strobe
227	Ledpar WarmWhite	Grid	253		2 ch, dim/strobe
228	Ledpar WarmWhite	Grid	255		2 ch, dim/strobe
231	Ledpar WarmWhite	Grid	301		2 ch, dim/strobe, house lights
	Free		303	510	
1101	Houselights ledstrips		511		house lights
1102	Houselights under balkony		512		house lights

**DMX-PATCH
INTELLIGENT**

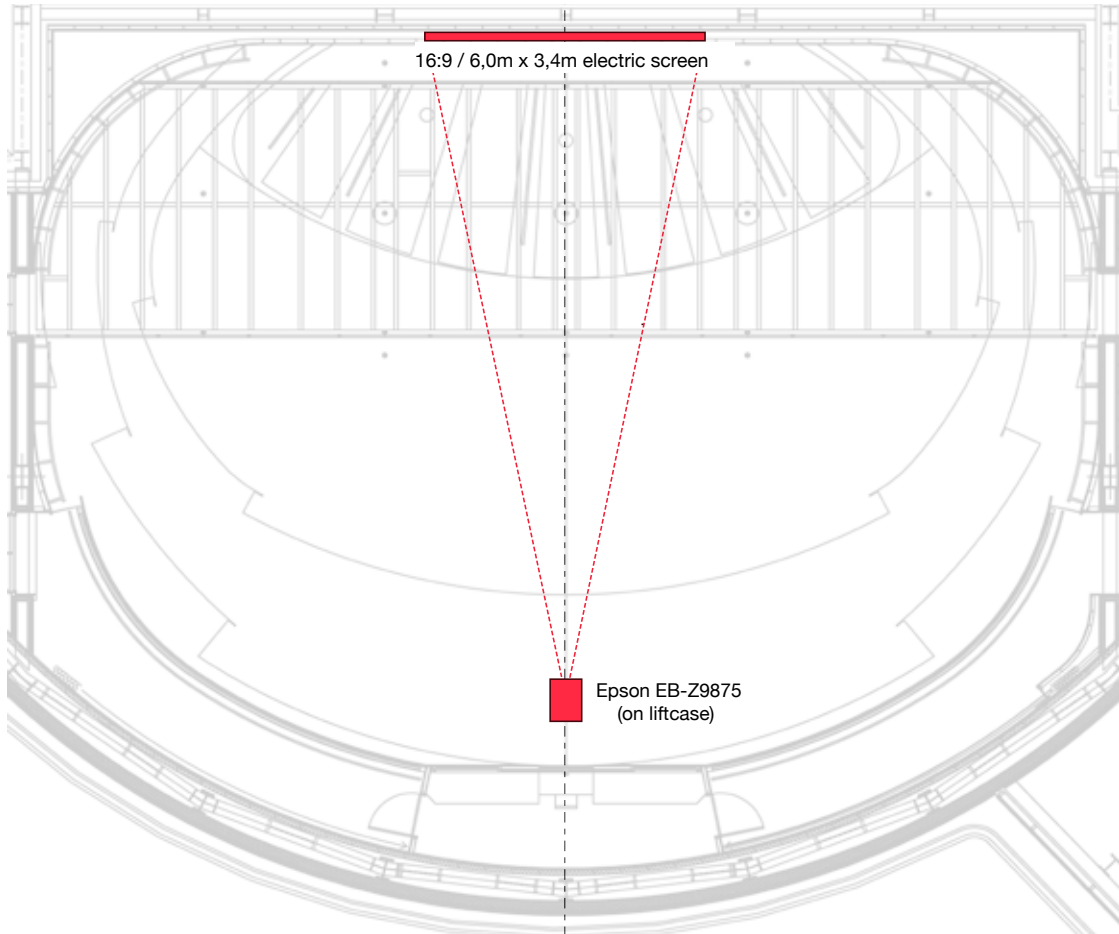
House: Art-Net 0.2
DMX-Line 2

#	Description	Where	Address	Fx address	Remarks
301	Clay Paky HPE 300	Truss U.S.	1		Standard
302	Clay Paky HPE 300	Truss U.S.	24		Standard
303	Clay Paky HPE 300	Truss U.S.	47		Standard
304	Clay Paky HPE 300	Truss U.S.	70		Standard
401	Mac Aura	Truss U.S.	93	107	Extended, hog4 needs 2 personality's: aura fx +mac aura
402	Mac Aura	Truss U.S.	118	132	Extended, hog4 needs 2 personality's: aura fx +mac aura
403	Mac Aura	Truss U.S.	143	157	Extended, hog4 needs 2 personality's: aura fx +mac aura
404	Mac Aura	Truss U.S.	168	182	Extended, hog4 needs 2 personality's: aura fx +mac aura
405	Mac Aura	Truss U.S.	193	207	Extended, hog4 needs 2 personality's: aura fx +mac aura
406	Mac Aura	Truss U.S.	218	232	Extended, hog4 needs 2 personality's: aura fx +mac aura
501	Cls pixelbar tricolore	Stagefloor	243		synchronize mode, 3 channel RGB for complete bar
502	Cls pixelbar tricolore	Stagefloor	246		synchronize mode, 3 channel RGB for complete bar
503	Cls pixelbar tricolore	Stagefloor	249		synchronize mode, 3 channel RGB for complete bar
504	Cls pixelbar tricolore	Stagefloor	252		synchronize mode, 3 channel RGB for complete bar
505	Cls pixelbar tricolore	Stagefloor	255		synchronize mode, 3 channel RGB for complete bar
506	Cls pixelbar tricolore	Stagefloor	258		synchronize mode, 3 channel RGB for complete bar
507	Cls pixelbar tricolore	Stagefloor	261		synchronize mode, 3 channel RGB for complete bar
508	Cls pixelbar tricolore	Stagefloor	264		synchronize mode, 3 channel RGB for complete bar
509	Cls pixelbar tricolore	Stagefloor	267		synchronize mode, 3 channel RGB for complete bar
510	Cls pixelbar tricolore	Stagefloor	270		synchronize mode, 3 channel RGB for complete bar
511	Cls pixelbar tricolore	Stagefloor	273		synchronize mode, 3 channel RGB for complete bar
512	Cls pixelbar tricolore	Stagefloor	276		synchronize mode, 3 channel RGB for complete bar
	first free channel:		279		
	free channels:		234		

Hertz Video

<p>PROJECTOR 1x Epson EB-Z9875 WUXGA 1920x1080 / 8,7k lumen / 16:9 <i>positioned in lifcase at F.O.H.</i> 1x Epson-lens ELPLS04 1.65-2.51:1</p> <p>PROJECTIONSREEN 1x Projecta electric screen 6,0m x 3,4m / 16:9 <i>fixed on wall, up-stage</i></p> <p>SCALING 2x Avitech Pacific C-A Scaler</p> <p>NETWORK 1x Lightware MX-FR9 9x9 Matrix <i>fixed in technical room</i> <i>All video-infrastructure is HD-BaseT</i></p> <p>NETWORK LINES <i>All lines are patchable as in- or output at the matrix</i> 3x Up Stage 1x Stage Right 4x Control room 3x F.O.H. 1x Grid 2x Backstage Left 2x Backstage Right</p>	<p>POSSIBLE INPUTS <i>The following video protocols are supported by the Avitech Pacific scaler:</i></p> <table> <thead> <tr> <th><i>Protocol:</i></th> <th><i>Connector:</i></th> </tr> </thead> <tbody> <tr> <td>VGA</td> <td>DE15</td> </tr> <tr> <td>HDMI</td> <td>TypeA</td> </tr> <tr> <td>DVI</td> <td>DVI-A / DVI-I / DVI-D</td> </tr> <tr> <td>Composite</td> <td>BNC / Cinch</td> </tr> <tr> <td>DP (Apple)</td> <td>Mini-Display-port</td> </tr> <tr> <td>SDI</td> <td>BNC</td> </tr> <tr> <td>HD-SDI</td> <td>BNC</td> </tr> </tbody> </table>	<i>Protocol:</i>	<i>Connector:</i>	VGA	DE15	HDMI	TypeA	DVI	DVI-A / DVI-I / DVI-D	Composite	BNC / Cinch	DP (Apple)	Mini-Display-port	SDI	BNC	HD-SDI	BNC
<i>Protocol:</i>	<i>Connector:</i>																
VGA	DE15																
HDMI	TypeA																
DVI	DVI-A / DVI-I / DVI-D																
Composite	BNC / Cinch																
DP (Apple)	Mini-Display-port																
SDI	BNC																
HD-SDI	BNC																

Hertz Video – Plot (Top)



Hertz Video – Plot (Side)

